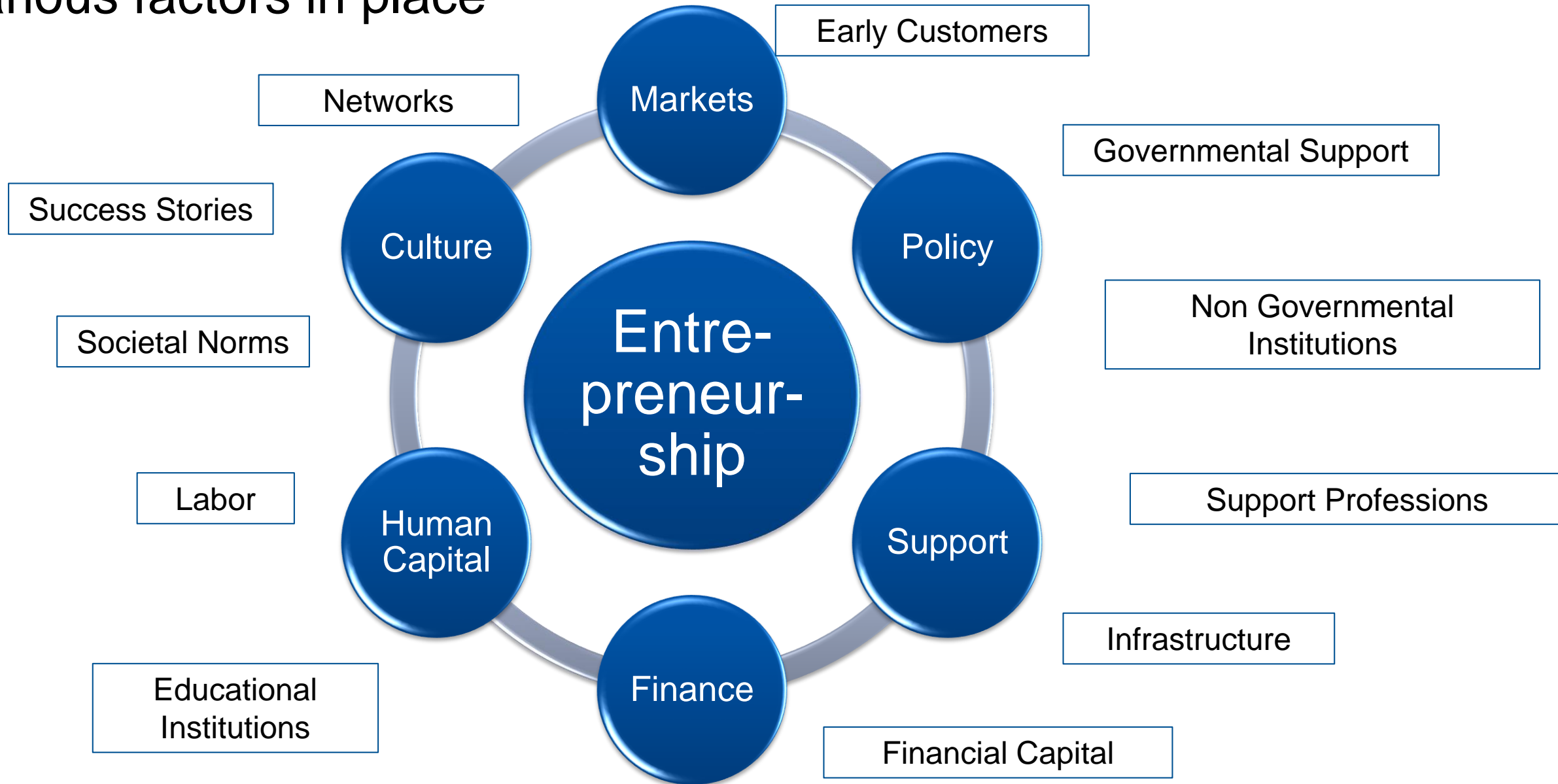


Educating 21st Century Corporate Leaders Chinese and Western Perspectives

Regional Innovation Ecosystems as Hotbeds of Global Entrepreneurship – How to Spur Deep Tech Startups

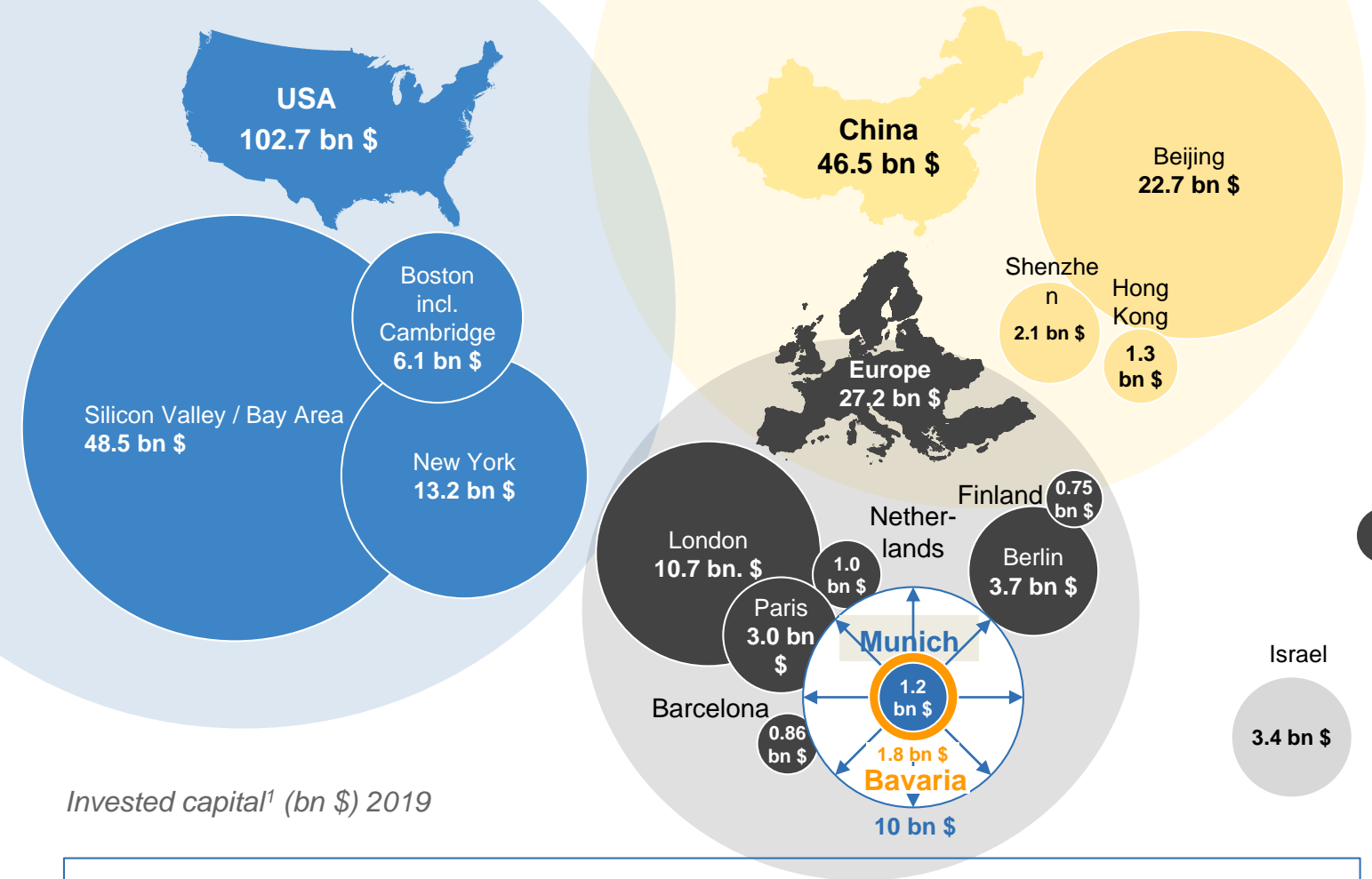
Gunther Friedl, Dean, TUM School of Management, DE

Successful Entrepreneurial Ecosystems have to have various factors in place



Illustrative

Our Ambition: Establish a European tech hub



Invested capital¹ (bn \$) 2019

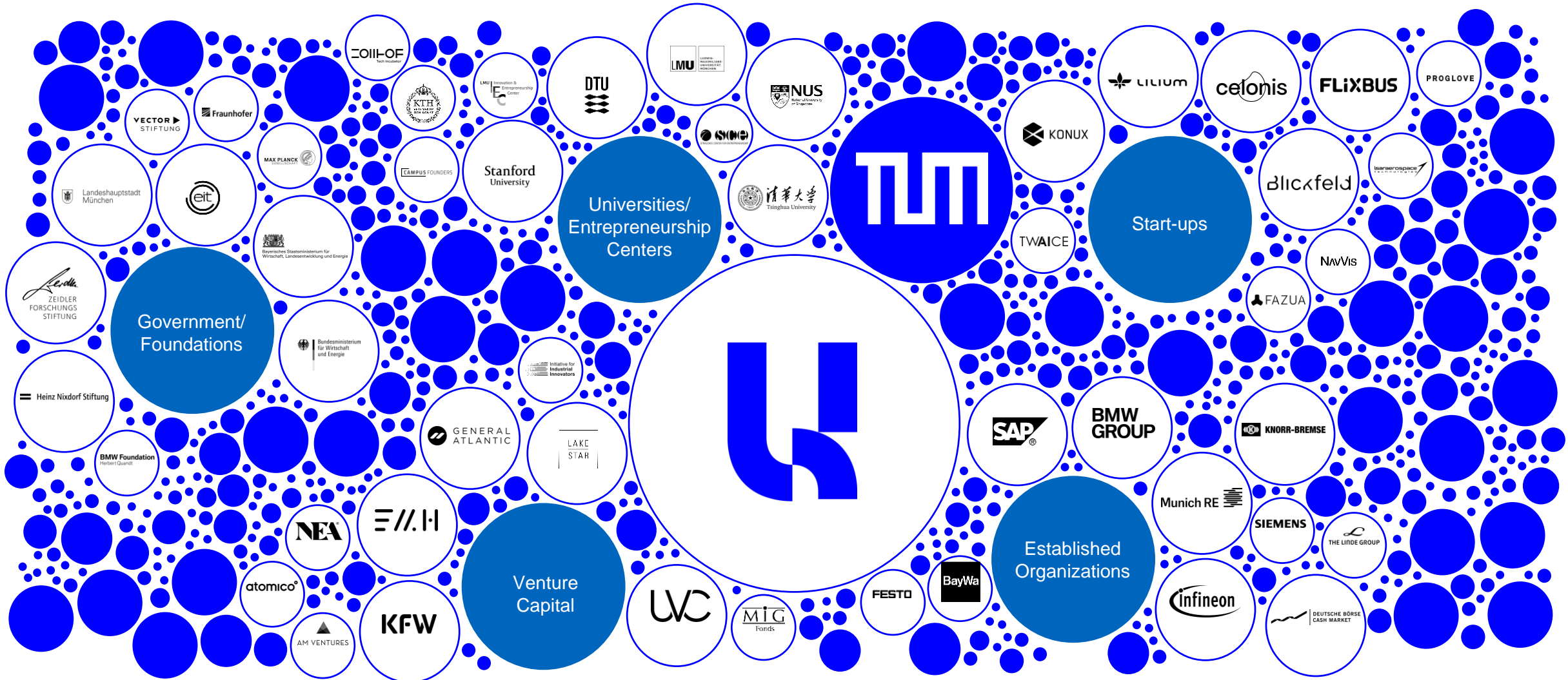
Key problem for Germany/EU identified: Venturing is the bottleneck when leveraging outstanding research for economic growth

Reaching full potential to make Munich **the entrepreneurial tech center in Europe** and a critical hub for European technological sovereignty.

	2020	2030
€ Invested capital/year	1 bn \$	10 bn \$
New employment/year	1,000	10,000
Scalable spin-offs/year	75	250
Priority patent applications	50	500
Corporate partners	100	500
VL talent/year	5,000	25,000

Source: Crunchbase/EY, BCG Analysis
 1. Invested capital includes seed, series and angel investment, no IPOs or post-IPO Funding

TUM is part of a strong ecosystem of innovation partners create new businesses together

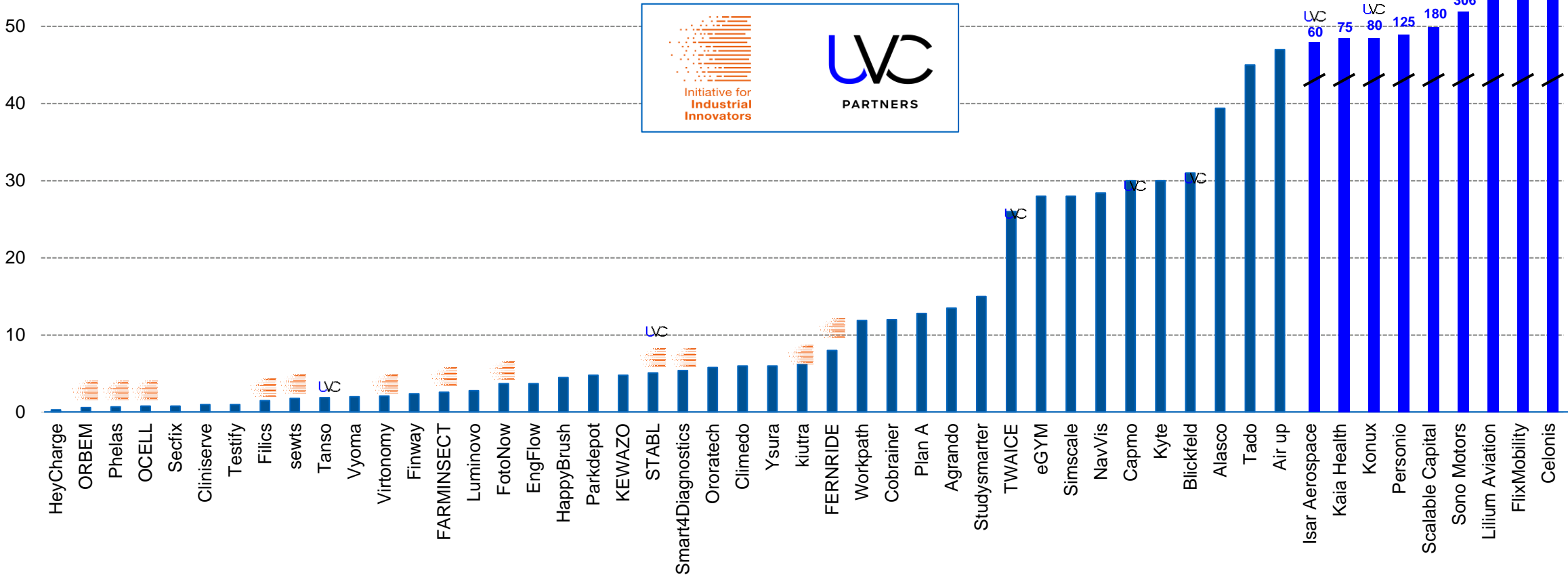


Our Achievements: UnternehmerTUM and TUM start-ups have raised over \$ 3,5 Billion in 2021

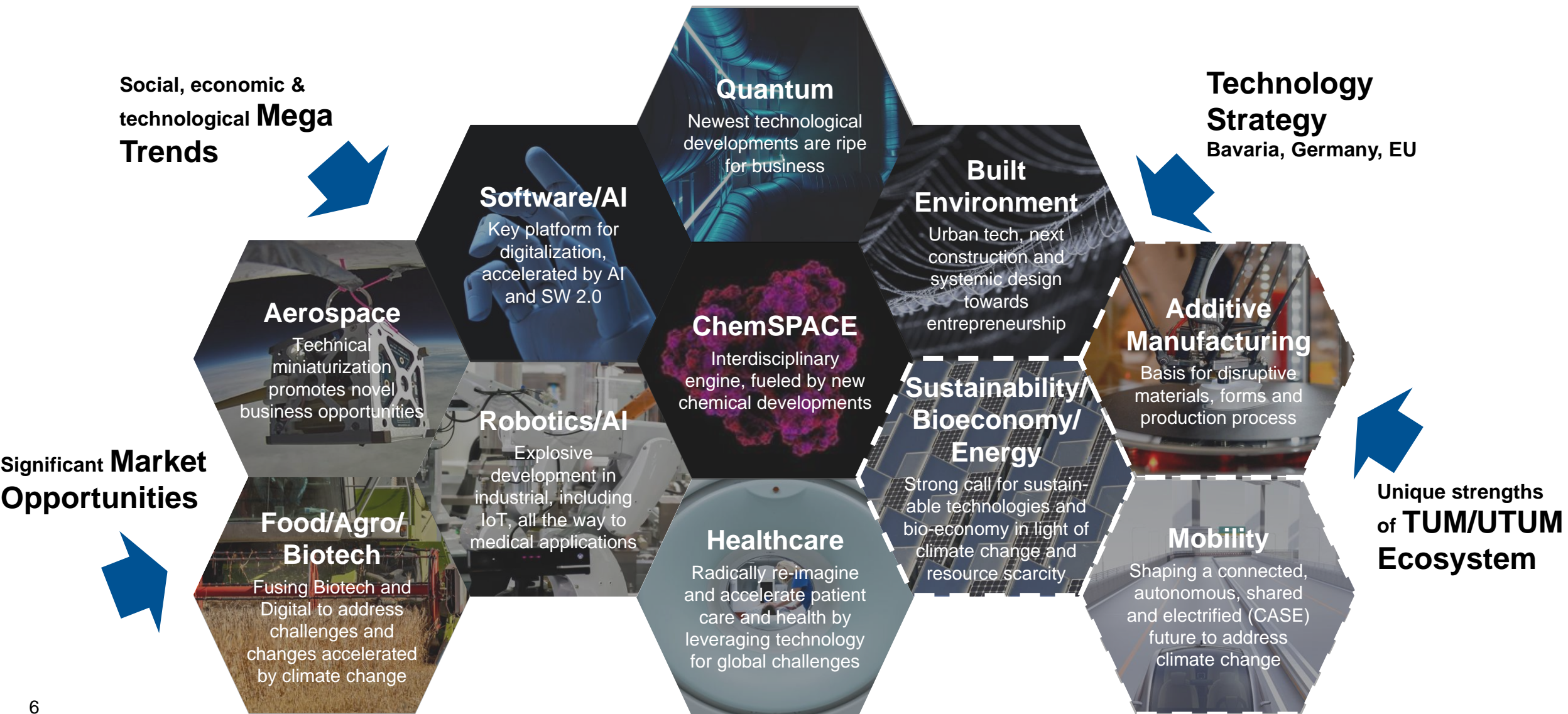


Start-ups

in million \$



Next step are the TUM Venture Labs with a focus on the development of disruptive technology businesses



Our Offering: Comprehensive support for founders

Translation of research strength into innovative growth...



Technology driven innovative spin-offs to tackle economically or socially relevant challenges in cross-functional



Venture Labs
AI, SuperTech and interdisciplinarity to promote innovation and exponential growth



Bavarian growth engine with TUM and UnternehmerTUM as hub

...through holistic enablement of innovative technology ventures



Education

Cross-functional market-driven applied technology skills for future entrepreneurs



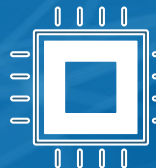
Venturing

Paths from idea to venture, accelerated through domain-focused offering



Events & Network

Domain-focused entrepreneurial network and spaces as a networking platform



Spaces & Infrastructure

Workspaces, labs, resources & (data) infra-structure in an interdisciplinary setting

Gunther Friedl
Dean

Technical University of Munich
TUM School of Management

Arcisstrasse 21
80333 Munich

Tel. +49 89 289-25800
gunther.friedl@tum.de
www.wi.tum.de